

# COVENTRY AT WOODFIELD COUNTRY CLUB

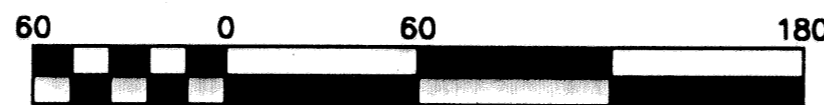
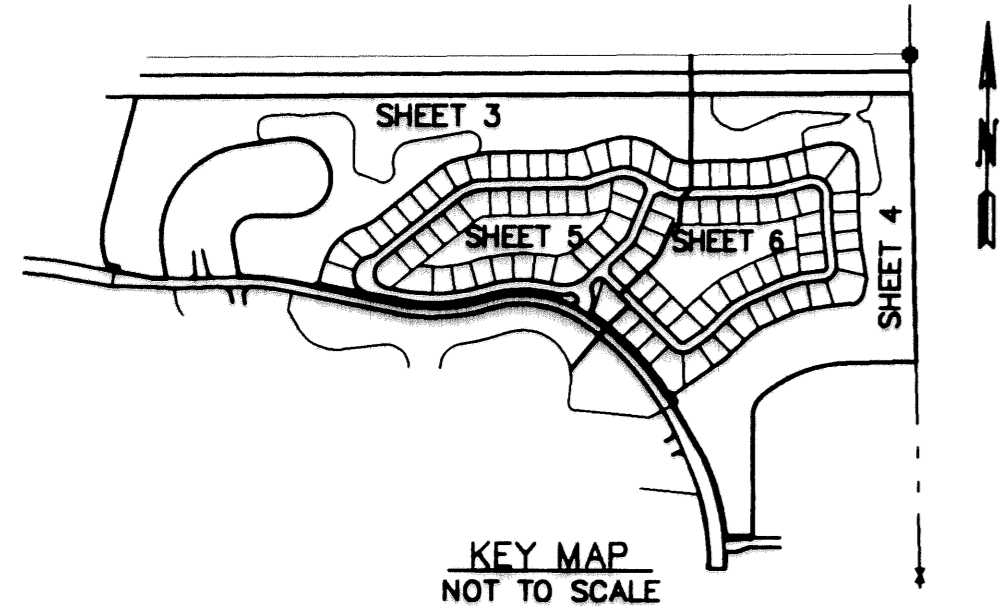
IN PART OF SECTION 4, TOWNSHIP 47 SOUTH, RANGE 42 EAST

CITY OF BOCA RATON, FLORIDA

SHEET NO. 5 OF 6

GEE & JENSON  
ENGINEERS - ARCHITECTS - PLANNERS, INC.  
WEST PALM BEACH, FLORIDA  
AUGUST 1994

28

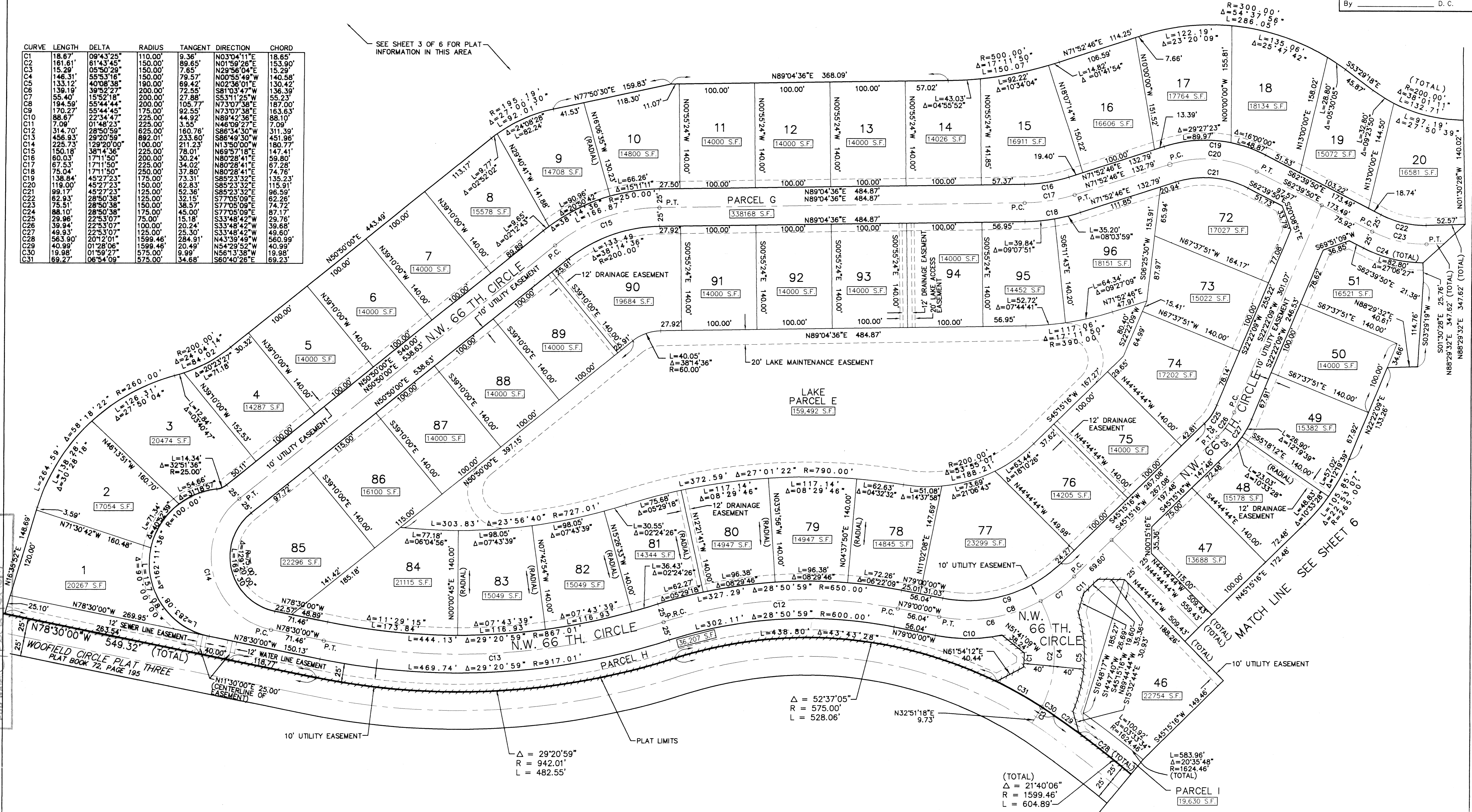


Scale 1" = 60 ft

STATE OF FLORIDA  
COUNTY OF PALM BEACH  
this plat was filed for  
record at \_\_\_\_\_ M this day  
of \_\_\_\_\_ 1994, and duly  
recorded in Plat Book No. \_\_\_\_\_  
on Pages \_\_\_\_\_ thru \_\_\_\_\_  
By \_\_\_\_\_ D. C.

CURVE	LENGTH	DELTA	RADIUS	TANGENT	DIRECTION	CHORD
C1	18.67	09°43'25"	110.00'	9.36'	N03°04'11"E	18.65'
C2	181.61	61°43'45"	150.00'	89.65'	N01°59'26"E	153.90'
C3	15.29	05°50'29"	150.00'	7.85'	N29°56'04"E	15.29'
C4	146.31	55°53'16"	150.00'	78.57'	N00°55'49"W	140.58'
C5	133.12	40°08'38"	190.00'	69.42'	N02°36'01"E	130.42'
C6	139.19	39°52'27"	200.00'	72.55'	S81°03'47"W	136.39'
C7	55.40	15°52'18"	200.00'	27.86'	S53°11'25"W	55.23'
C8	194.59	55°44'44"	200.00'	105.77'	N73°07'38"E	187.00'
C9	170.27	55°44'45"	175.00'	92.55'	N73°07'38"E	163.63'
C10	88.67	22°34'47"	225.00'	44.92'	N89°42'36"E	88.10'
C11	7.09	01°48'23"	225.00'	3.55'	N46°09'27"E	7.09'
C12	314.70	28°50'59"	625.00'	160.76'	S86°34'30"W	311.39'
C13	456.93	29°20'59"	625.00'	233.60'	S86°49'30"W	451.98'
C14	225.73	129°20'00"	100.00'	211.23'	N13°50'00"W	180.77'
C15	150.18	38°14'36"	225.00'	78.01'	N69°57'18"E	147.41'
C16	60.03	17°11'50"	200.00'	30.24'	N80°28'41"E	59.80'
C17	67.53	17°11'50"	225.00'	37.80'	N80°28'41"E	67.28'
C18	75.04	17°11'50"	250.00'	37.80'	N80°28'41"E	74.76'
C19	138.84	45°27'23"	175.00'	73.31'	S85°23'32"E	135.23'
C20	119.00	45°27'23"	150.00'	62.83'	S85°23'32"E	115.91'
C21	99.17	45°27'23"	125.00'	52.36'	S85°23'32"E	96.59'
C22	62.93	28°50'38"	125.00'	32.15'	S77°05'09"E	62.26'
C23	75.51	28°50'38"	150.00'	38.57'	S77°05'09"E	74.72'
C24	88.10	28°50'38"	175.00'	45.00'	S77°05'09"E	87.17'
C25	29.96	22°53'07"	75.00'	15.18'	S33°48'42"W	29.76'
C26	29.94	22°53'07"	100.00'	20.24'	S33°48'42"W	39.68'
C27	49.93	22°53'07"	125.00'	29.80'	S33°48'42"W	49.60'
C28	563.90	20°12'01"	1599.46'	284.91'	N43°39'49"W	560.99'
C29	40.99	01°28'06"	1599.46'	20.49'	N54°29'52"W	40.99'
C30	19.98	01°59'27"	575.00'	9.99'	N56°13'38"W	19.98'
C31	69.27	06°54'09"	575.00'	34.68'	S60°40'26"E	69.23'

SEE SHEET 3 OF 6 FOR PLAT INFORMATION IN THIS AREA



SUBDIVISION: Coventry at Woodfield  
 BOOK: 74  
 FLOOR: 28  
 QUAD: 28  
 SE: 28  
 PLAT NAME: Woodfield Country Club  
 PLAT CODE: 28  
 PLAT NO.: 28

NOTED \_\_\_\_\_  
 ED \_\_\_\_\_  
 OVED \_\_\_\_\_  
 NO. 93-330

SEE SHEET 6

(TOTAL)  
 $\Delta = 21^{\circ}40'06''$   
 $R = 1599.46'$   
 $L = 604.89'$

$\Delta = 29^{\circ}20'59''$   
 $R = 942.01'$   
 $L = 482.55'$

$\Delta = 52^{\circ}37'05''$   
 $R = 575.00'$   
 $L = 528.06'$